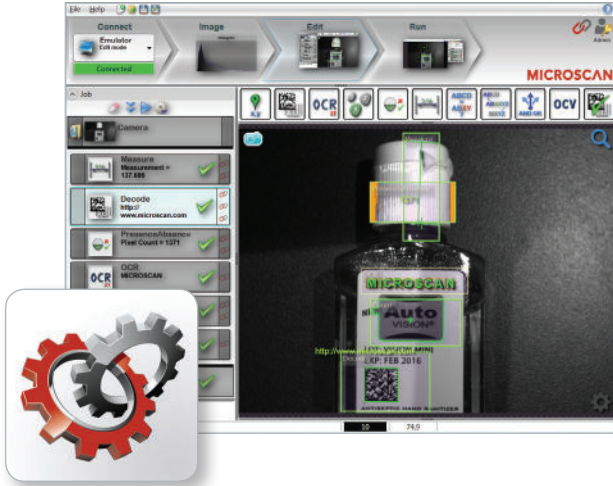













AUTOVISION® SOFTWARE



Machine Vision Simplified

Microscan's AutoVISION is the easiest machine vision software available for basic to mid-range vision applications. Process and manufacturing engineers no longer need to become experts in machine vision in order to successfully deploy a system that meets their traceability, inspection and quality control needs.

AutoVISION Software: Capabilities


-  **Locate Tool**
 - Robust edge-based location used to find a part or feature, or may be used to position other tools.
-  **Decode Tool**
 - Decode all standard linear barcodes, stacked barcodes, Data Matrix, and other symbols, or use to locate other tools.
-  **Optical Character Recognition (OCR) Tool**
 - Read text using built-in or user-specified fonts, including advanced IntelliText algorithms for hard-to-read characters.
-  **Count Tool**
 - Count objects based on their size or outline.
-  **Presence/Absence Tool**
 - Confirm a part or feature is present, or inspect for defects based on counting pixels with a specified contest or edge gradient.
-  **Measure Tool**
 - Measure the distance between two edges and check against a specification.
-  **Match Strings**
 - Check that an output string from a tool, such as the Decode or OCR Tool, matches the user-defined string.
-  **String Format**
 - Edit strings to prepare them for output.
-  **Logic Tool**
 - Use logic expressions to combine tool results into outputs.
-  **Optical Character Verification (OCV) Tool**
 - Verify the quality and correctness of printed text.
-  **Symbol Quality Verification Tool**
 - Verify 1D and 2D symbol quality to ISO15415, ISO15416 or AIM DPM / ISO29158 standards.

 **Microscan Link**
Microscan Link connects parameters inside AutoVISION jobs to industrial control systems and the CloudLink Dashboard Interface. A connection to a PLC system can be created by simply clicking a "Link" button on the desired parameter to connect it.

Intuitive User Interface
AutoVISION features an intuitive user interface that guides the user to connect to a device, configure the hardware, program the job, and monitor results. Upon start up, it automatically detects all compatible devices and immediately begins configuration. It can also be used in 'emulator' mode with stored images on a PC.

Immediate Feedback
Provides real time feedback and results as a device is being configured or during programming.

Multi-Language
Easily switch the interface between English, German, and Chinese languages.

 **CloudLink Web HMI**
CloudLink provides tools for visualization of AutoVISION data, including the fully-customizable CloudLink Dashboard interface, and two pre-created HTML demos for simpler devices. CloudLink Dashboard provides a real time view of linked tool values and images from compatible AutoVISION cameras and vision systems. It uses a web browser to display results in a customizable window on any browser-enabled device, including smart phones and tablets.

Secure Access
AutoVISION's password protection option creates four separate access levels, with password control set at the Administrator level.

Scalable to Visionscape
For applications demanding more flexibility or configuration options, AutoVISION jobs can be easily opened with Visionscape® FrontRunner to enable scripting and other advanced programming capabilities.

For more information on this product, visit www.microscan.com.

MICROSCAN®

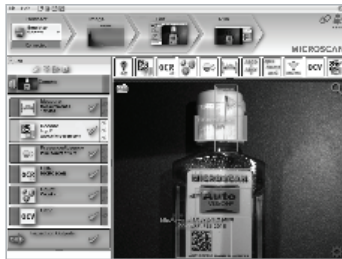
AUTOVISION® SOFTWARE SPECIFICATIONS AND OPTIONS



HARDWARE REQUIREMENTS:

Smart Camera	Resolution	Interface
Vision HAWK	WVGA/0.4MP	RS-232, EtherNet/IP, Ethernet TCP/IP, PROFINET I/O
Vision HAWK C-Mount	WVGA/0.4MP	RS-232, EtherNet/IP, Ethernet TCP/IP, PROFINET I/O
Vision HAWK	SXGA/1.2MP	RS-232, EtherNet/IP, Ethernet TCP/IP, PROFINET I/O
Vision HAWK C-Mount	SXGA/1.2MP	RS-232, EtherNet/IP, Ethernet TCP/IP, PROFINET I/O
Vision HAWK C-Mount	WUXGA/2.0MP	RS-232, EtherNet/IP, Ethernet TCP/IP, PROFINET I/O
Vision MINI Xi	WVGA/0.4MP	RS-232, EtherNet/IP, Ethernet TCP/IP
Vision MINI Xi	SXGA/1.3MP	RS-232, EtherNet/IP, Ethernet TCP/IP
Vision MINI Xi	QXGA/3.0MP	RS-232, EtherNet/IP, Ethernet TCP/IP
Vision MINI	WVGA/0.4MP	RS-232, Ethernet TCP/IP over USB
Vision MINI	SXGA/1.3MP	RS-232, Ethernet TCP/IP over USB
Vision MINI	QXGA/3.0MP	RS-232, Ethernet TCP/IP over USB

NOTE: All AutoVISION Smart Cameras include AutoVISION software with Visionscape and Verification/OCV upgrades available, with the exception of Vision MINI QXGA and Vision HAWK SXGA Color which are Visionscape only.



MINIMUM PC REQUIREMENTS:

Hardware	Min. CPU	Min. Interface
Windows PC	Core2Duo	1 USB or 1 Network
Software	Min. Version	Min. RAM
Windows XP (32 bit)	SP3	1 GB
Windows 7 (32, 64 bit)	SP1	2 GB

QMS CERTIFICATION

www.microscan.com/quality

©2015 Microscan Systems, Inc. SP075G-EN-1114
 Read Range and other performance data is determined using high quality Grade A symbols per ISO/IEC 15415 and ISO/IEC 15416 in a 25° C environment. For application-specific Read Range results, testing should be performed with symbols used in the actual application. Microscan Applications Engineering is available to assist with evaluations. Results may vary depending on symbol quality. **Warranty**—For current warranty information on this product, please visit www.microscan.com/warranty.

MICROSCAN®

www.microscan.com