



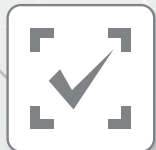
RS35

series

A Simple Snap Increases Efficiency and Productivity to the Max



Android 10 operating system, GMS certificated



1D and 2D barcodes data capture/ HF RFID capability



or



Slim and compact design



IP65 and IP67 ratings ensure a full protection against dust / 1.8m impact resistance



Touch panel welcomes stylus, bare, wet or gloved fingertip inputs



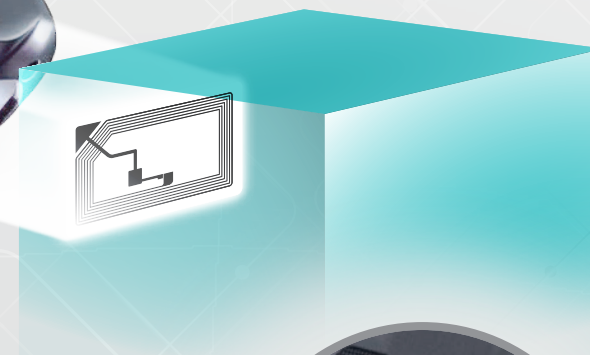
Able to take photos with pistol on/ camera autofocus 13 megapixels with LED flash



5.5"

5.5" touch display provides a larger work surface and increases visibility

NFC support



Quick-release hand strap saves time of battery replacement



One-piece battery



Hot-swap function

Allows the device to remain in operation during the battery replacement

RS35 series



Performance	Operating System	Android 10 (GMS)
	CPU	Octa-core 1.8GHz
	Memory	Standard 3GB x 32GB / Optional 4GB x 64GB
	Expansion	Micro SD card slot with SDHC (up to 32GB) and SDXC (up to 2TB) support
	SIM / SAM ¹	2 SIM slots and 1 SAM slot
	Operating Power	Replaceable and rechargeable 3.85V, Li-ion 4000mAh
	Working Hours ²	minimum 12 hours
	Alert	1 tri-color LED, 1 bi-color LED, vibrator
Wireless Communication	Interface Supported	6-pin I/O & USB 2.0 Type-C with OTG
	WWAN	EDGE/GPRS/GSM: 850/900/1800/1900 UMTS/HSPA+: B1/B2/B4/ B5/B6/B8 FDD LTE: B1/B2/ B3/B4/B5/B7/B8/B12/B13/B17/B19/B20/B25/B26/B28 TDD-LTE: 38/39/40/41 Support VoLTE and Worldwide Band
	WLAN	IEEE 802.11 a/b/g/n/ac/d/h/i
	Additional WLAN Features	802.11r (fast roaming), 802.11 v/k(Voice-Enterprise), CCX (Cisco Compatible Extensions) compatible
	WPAN	Bluetooth® Class I, V4.2 dual mode, V2.1 with Enhanced Data Rate (EDR)
Data Capture	GPS	GPS/A-GPS/GLONASS/Galileo/Beidou
	Barcode Scanning	2D imager 2D imager tilting angle at 70° ³
	RFID Read / Write	HF RFID 13.56 MHz frequency which supports ISO14443A, ISO14443B, ISO15693, and Felica Support NFC (Peer-to-Peer, Card Reader, Card Emulation)
	Camera	Rear autofocus 13 megapixels with LED flash Front 5 megapixels ³
Physical Characteristics	Display	5.5" HD+ 720 (W) x 1440 (H), Transmissive IPS LCD, outdoor visibility, optically bonded to Touch Panel
	Touch Panel	Corning® Gorilla® Glass , Capacitive touch with stylus or bare or gloved fingertip input, multi-touch CTP water proof support water rejection and wet finger
	Interactive Sensor	Light sensor, Proximity sensor, Motion sensor (Accelerometer, G-sensor), E-compass (Magnetometer), Gyroscope
	Keypad	1 programmable key, volume up and down keys, left and right trigger keys, power key
	Audio	Speaker, microphones with echo and noise cancellation
	Size (LxWxH)	165 x 76.8 x 17.9 mm
	Weight	288 g (with battery)
User Environment	Operating Temperature	-20°C to 50°C / -4°F to 122°F
	Storage Temperature	-30°C to 70°C / -22°F to 158°F (Without battery)
	Humidity (non-condensed)	Operating 10% to 90% / Storage 5% to 95%
	Impact Resistance	IP65 & IP67, 500 tumbles at 0.5 m Standard: 1.5 m (5 ft.) multiple drops onto concrete, 6 drops on each side With rubber boot: 1.8 m (6 ft.) multiple drops onto concrete, 6 drops on each side
	Electrostatic Discharge	± 15 kV air discharge, ± 8 kV contact discharge
Development Support	Regularity Compliance	CE, FCC, IC, NCC, TBL, JRL, SRRC, CCC, BIS, WPC, WEEE, RoHS, REACH, CA65, BC, NrcAN
Application Software	Android 10.0 SDK, reader API, SAM API, HTML 5 API	
Accessories	ReaderConfig, ButtonAssignment, Mobile Deployment Suite, Software Trigger Key, Xamarin Binding, CipherLab TE, AppLock, HTML5 (Browser and API), SOTI MobiControl, Kalipso, AirWatch, ReMoCloud	
Warranty	Charging and communication cradle, USB snap-on cable, Hand strap, Rubber boot, Pistol grip, 4-slot battery charger, Multi-slot Terminal charging cradle ³ , UHF RFID reader ³ , Vehicle cradle ³	
	1 year	

1. SAM controller support Mifare SAM security.

2. Minimum 12 hours under WLAN and 2D scanning per 20 seconds, LCD 50% backlight and speaker on (volume is default) at 25°C, RFID off / Bluetooth® off / IEEE 802.11 a/b/g/n/ac on. The test is based on one broadcasting packet per second.

3. Please contact us for availability.

ACCESSORIES



Multi-slot Battery Charger



Single-slot Cradle



Snap-on Cable



Hand Strap



Rubber Boot



Pistol Grip



HEADQUARTERS
CipherLab Co., Ltd.
CipherLab Electronics Trading
(Shanghai) Co., Ltd.
CipherLab USA Inc.
CipherLab Europe

12F, 333 Dunhua S. Rd., Sec.2 Taipei, Taiwan 10669
Tel +886 2 8647 1166 Fax +886 2 8732 3300

E Room, 9F, No.726 West Yan'an Road, Changning District, Shanghai, China 200050
Tel +86 21 3368 0288 Toll Free +86 400 920 0285 Fax +86 21 3368 0286

2552 Summit Ave. STE 400 Plano, Texas 75074, USA
Tel +1 469 241 9779 Toll Free +1 888 300 9779 Fax +1 469 241 0697

Cahorslaan 24, 5627 BX Eindhoven, The Netherlands
Tel +31 (0) 40 2990202



▶VIDEO



▶WEBSITE

Efficiency, Versatility and Slim Design for Competitive Advantages



CipherLab's RS35 is the device that brings enterprise-class features through a pocketable consumer style smartphone with rugged designs. The RS35 focuses on the versatility of its features, and it aims to provide its users the ability to deliver a positive customer experience, offer more convenient service and save time and effort. With its versatile features, the RS35 gives businesses competitive advantages that help the mobile workforce get more work done in less time.

An Affordable Device that is Versatile and Intuitive

CipherLab's RS35 is a versatile mobile device that provides your enterprise and staff a better solution for daily tasks with efficiency. If you're looking for device that can streamline workflow with the combination of integrated scanning, powerful processing, intuitive touchscreen interface and robust connectivity, the RS35 has got you covered. If manageability and enterprise-class security is your cup of tea, the RS35 has CipherLab's self-developed enterprise management tools for easy deployment and top data protection. CipherLab's RS35's competitive price combined with competitive features makes it the best investment for your business.



Data Capture with Agile Performances

CipherLab RS35's versatile reader options include **1D and 2D barcode scanning**, **HF RFID** capabilities and contactless **NFC** application. Supported with agile reading, the RS35's performance can read barcodes even in poor condition. Your costumers can fully enjoy the experience without having to wait for the barcode to read. Your staff also never have to worry about missing a scan with visual and audio confirmations of on-screen LED lights and beepers. The three modes of NFC (card emulation, card reader, peer to peer) make reading data effortless. It also comes with a switch button for UHF RFID reader so it's easy to switch modes for specific tasks. In the case of needing different reading angles, CipherLab's RS35 also provides the **70-degree** tilting device on request.



Protection Against Accidental Drops and Demanding Environments

The CipherLab RS35's efficient features are under maximum protection with its rugged designs. RS35's rugged design keeps your workers free of worries when working in different environments. Its **IP65** and **IP67** ratings allow the device to work in demanding environments such as rain and dust. Furthermore, the RS35 has a 1.5m drop resistance, **1.8m drop resistance** with rubber boot and 500 tumbles at 0.5m. Workers can feel completely secured while focusing on the tasks at hand. Its intuitive touchscreen is also protected with Corning Gorilla Glass, which is shatterproof and has a high resistance to scratches from sharp objects. With wide operating temperatures, the RS35's productivity is guaranteed in a wide range of environments and conditions. Additionally, its reliable designs can save repair costs and extend the life of the RS35.



Instant Access to Online Information with Seamless Wi-Fi Connection

The RS35 provides seamless in-store communication with one of the most reliable transmission solutions in the market. The RS35's transmission comes in the form of **IEEE802.11 a/b/g/n/ac/d/h/i**. These reliable connections support fast roaming and strengthen store operation in any industry. Its **VoLTE** feature with noise reduction microphone and echo cancellation assures easy in-store communication in any retail environment. With accurate route planning being so important in optimizing customer experience, RS35's GPS/A-GPS gives you accurate navigation across boundaries which is no doubt a convenient feature for last-mile delivery and light transportation & logistics.



Intuitive and User-friendly Experience with User-centric Designs

User-centric design is very important when it comes to the RS35. This design, very similar to a smart phone, allows the users to feel familiar with the device and lessen the learning time. It features a large 5.5-inch screen which allows users to see more information clearly and avoid input mistakes. Moreover, users can see the screen without any problems indoors and outdoors with its 720x1,440-pixel IPS LCD screen. Its multi-touch panel supports wet, gloved fingers and stylus for users to use in different environments and applications. All these features are designed to be slim and lightweight so it's easy for anyone to carry.

Dependable Performance that is Long-lasting



The RS35 takes pride in its dependability in increasing user work efficiency with its powerful performances. It is equipped with **Android 10**, Google Mobile Service (**GMS**) and the seal of Android Enterprise Recommended (**AER**) which give you full enjoyment of Google applications and consistent user experiences, and allow IT staff to manage Android devices with ease. Its Octa-core 1.8 GHz CPU has enough power to handle all your workload. With 3GB RAM/32GB ROM and an option to expand, the RS35 provides plenty of space for applications and data storage. CipherLab knows that your productivity heavily depends on our mobile device; therefore, our standard, removable and rechargeable battery can deliver an impressive 12 hours of power and ensure productivity for a full work shift. This removable 4000 mAh battery design can also reduce battery changing time, lower repairing cost and increase the device's life cycle. Moreover, the RS35 comes with a **hot-swap** feature that the dead battery can be simply replaced with a fully charged one even without leaving your current applications or switching to suspending mode. The unfavorable interruption and data loss is eliminated.

Comprehensive Management Solutions



CipherLab **ReMoCloud**®, certified by Google **EMM** (Enterprise Mobility Management), allows you to deploy, manage and monitor CipherLab's Android devices via internet anytime and anyplace from the comfort of one centralized location.



CipherLab **ADC** (Android Device Configuration) gives your administrator the ability to synchronize device settings and configurations with ease. These configuration utilities can perform system settings and updates over USB connection or **WMDS** (Wireless Mobile Deployment System). Through BarcodeToSetting, you could generate barcodes for the setting deployments.