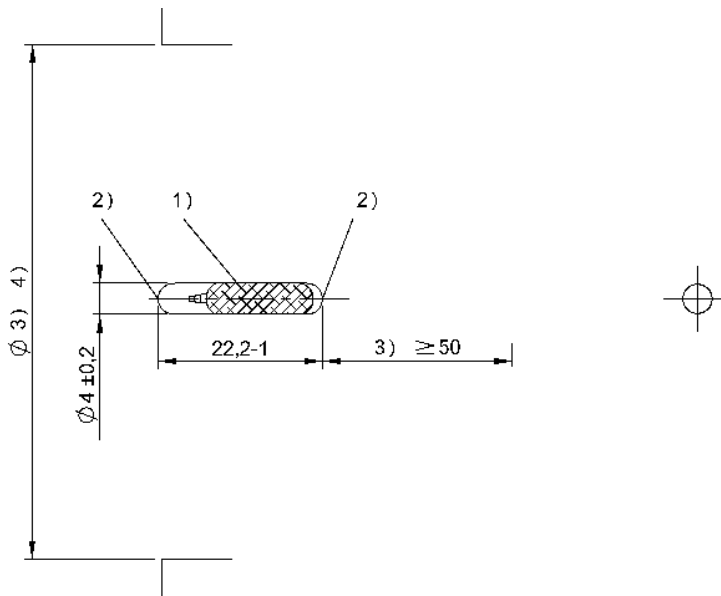


BIS M-152-03/A BIS00M2



1) Sensing surface parallel 2) Sensing surface axial 3) Clear zone 4) see corresponding R/W head



Electrical data

| | |
|---------------------------|-----------------------------------------------------|
| Data retention time/years | ≥ 10 |
| Memory capacity | 112 Byte |
| Memory organization | 28 × 4 bytes |
| Memory size, read | 8 Byte |
| Programming cycles | up to 50 °C: 100.000 |
| Programming time | for 16 bytes: 0.1s |
| Read cycles | Unlimited |
| Read time | User ID for 8 bytes: 0.02 s for 16 bytes: 0.03 s |

Environmental conditions

| | |
|--------------------------------------|-------------------------------------------|
| Ambient temperature | -25...85 °C |
| EN 60068-2-27, Continuous shock load | yes |
| EN 60068-2-27, Shock | yes |
| EN 60068-2-6, Vibration | yes |
| Protection type IEC 60529 | IP68 1 m, 24 h, 20 °C |
| Storage temperature | -25...85 °C |
| Storage temperature temporary | 120 °C 1x100 h -40 °C...90 °C 1x1000 h |

Functional safety

| | |
|-------------------------|-----|
| EN 60068-2-32 Free fall | yes |
|-------------------------|-----|

General data

| | |
|---------------------|---------------|
| Antenna type | Rod |
| Approval/Conformity | CE |
| EN 55011 | Size 1, Cl. A |
| EN 55022 | Size 1, Cl. B |

Material

| | |
|------------------|--------------------|
| Housing material | Glass, Transparent |
|------------------|--------------------|

Mechanical data

| | |
|--------------------|---------------|
| Application weight | 0.60 g |
| Diameter tolerance | ±0.2 mm |
| Dimension | Ø 4 x 22.2 mm |

Remarks

Values are under rated conditions unless otherwise specified.
Only when used together with the appropriate read/write head.
For installation requirements see corresponding read/write head.
Time specification includes data check.
Torsional, bending and impact loading is not permitted.
For installation in metal: Observe clear zone.